



Water disinfection of board of the ships.

Water disinfection using an Envirolyte ELA-200 installation on M/S SeaWind ferry, Tallink Group

SeaWind sails several times a week from Tallinn to Vuosaari (Finland), a neighbourhood in the City of Helsinki. It is located by the sea in East Helsinki, and with its area of 15.38 km² is geographically the largest district in the city.



The ferry was built in 1972. Renovated in 1984/1989

- Length: 155 m
- Breadth: 21 m
- Engines: 7 350 Kw
- Speed: 17,3 not
- Ice class: 1B

- Decks: 7
- Passengers: 119
- Passenger cabins: 98
- Lane meters: 1000

The fresh water tank is approximately 60 m³.

Installed Unit: Envirolite ELA-200, capacity 20 L of Anolyte/ hour .

Dosing ratio: 1 L of anolyte per 1000 L of intake water.

Dosing point: in the intake water pipe.

Installation



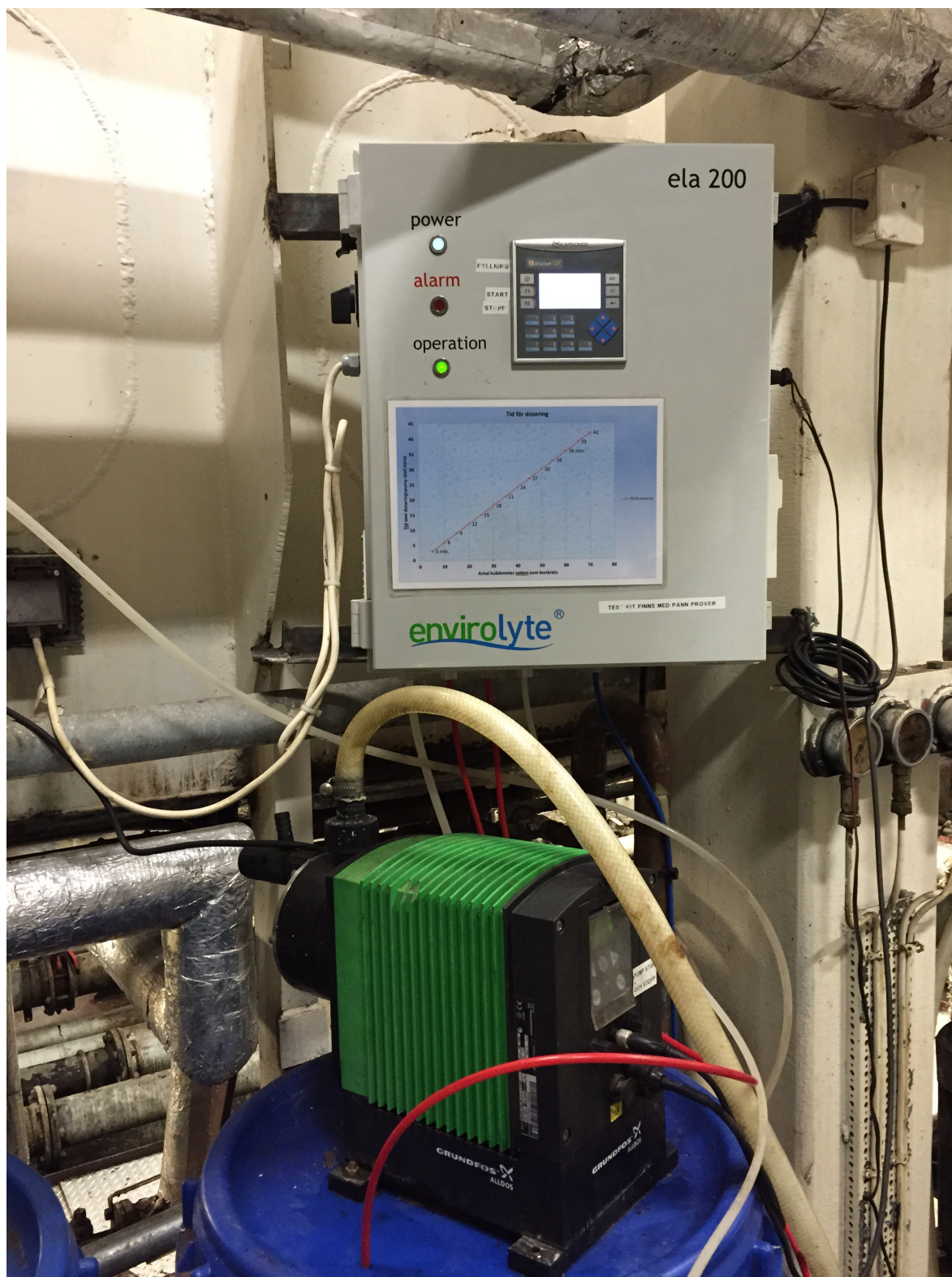
Envirolite ELA-200 anolyte generator on board of M/S SeaWind



General view of Envirolyte ELA-200 installation



Mains water supply to ELA-200 with filter and pressure controller



ELA-200 with analyte tank and dosing



Anolyte dosing point in the water intake pipe

The EnvirolYTE ELA-200 installation was accomplished by EnvirolYTE distributor in Finland - EnvirolYTE Suomi Oy, Hallimestarinkatu 23, 20780 Kaarina, Finland, e-mail: heikki.puurula@envirolyte.fi, matti.kannisto@envirolyte.fi, Tel.: +358 40 547 9220, +358 40 540 5110