



Application: Disinfection of municipal drinking water.

Location of the installation: Riddarhyttan, Skinnskatteberg municipality, Sweden



Pumping station



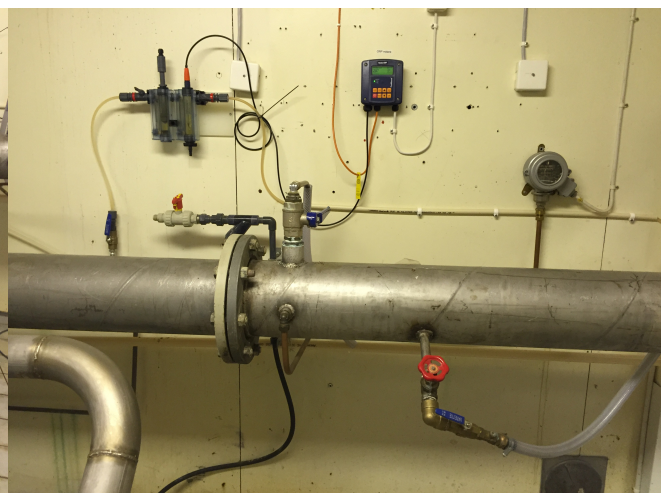
Riddarhyttan

Population: ~1000 people.

Drinking water consumption: ~ ~700 m³/day



Water pumps



Analyte injection point

Type of the EnvirolYTE equipment: ELA - 2 000ANW.



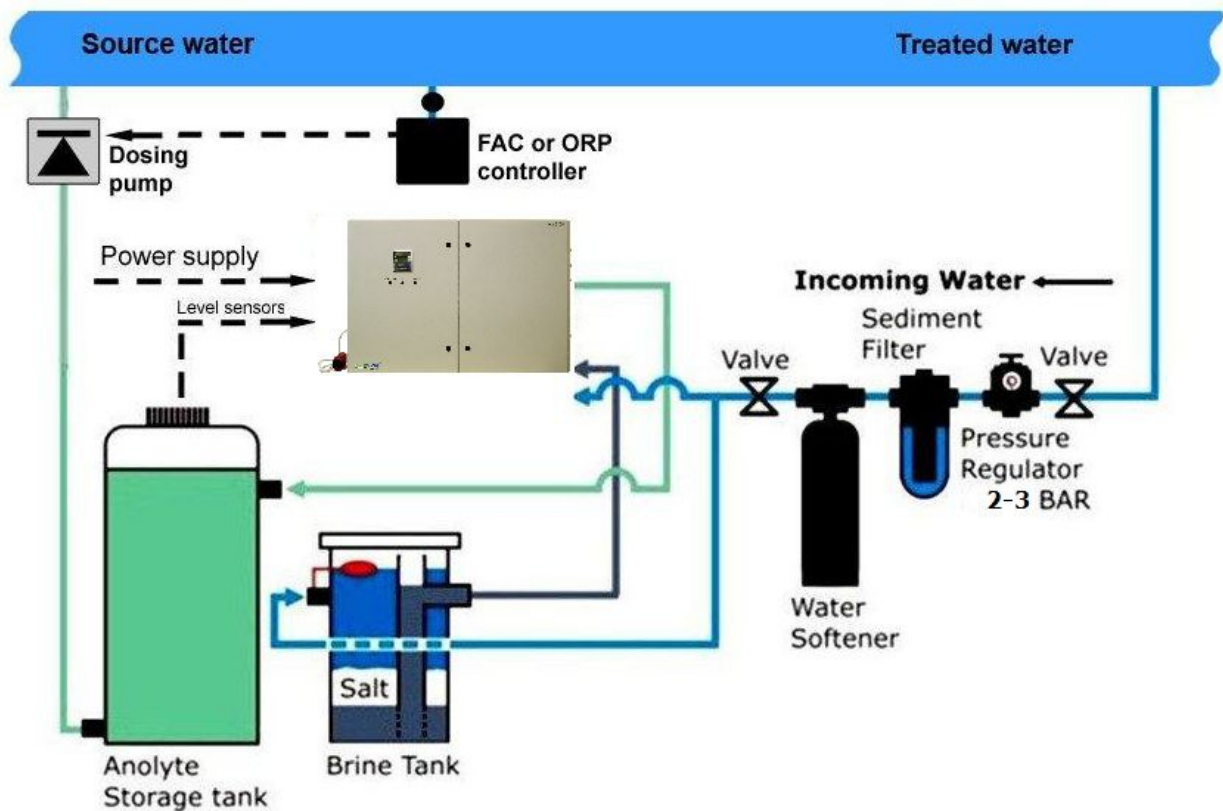
EnvirolYTE ELA-2000ANW analyte generator

Previously use technology: None



Anolyte storage tank

Below can be seen a schematic of the systems layout



The reported benefits of using Envirolyte water disinfecting technology :

Safety

- no danger of chlorine gas explosion and hazards associated with transportation of the cylinders;
- no need to mix or dilute hazardous chemicals;
- environmental friendly solution;

Efficiency

- elimination of biofilms and inactivation of pathogenic microorganisms including Legionella species, and nil bacteria counts;
- creates a longer-lasting residual than traditional chlorination, often at a lower dosage
- right dosage, no more no less – corrosion is reduced;
- significant reduction of Trihalomethane and other DBP;

Cost reducing

- Envirolyte system is fully automatic and only requires a minimal operator attention;
- no need for transport, handling or storage of chlorine gas or hypochlorite;
- on site installation in close proximity of urban population;

© Copy right Envirolyte Industries International Ltd.
2015